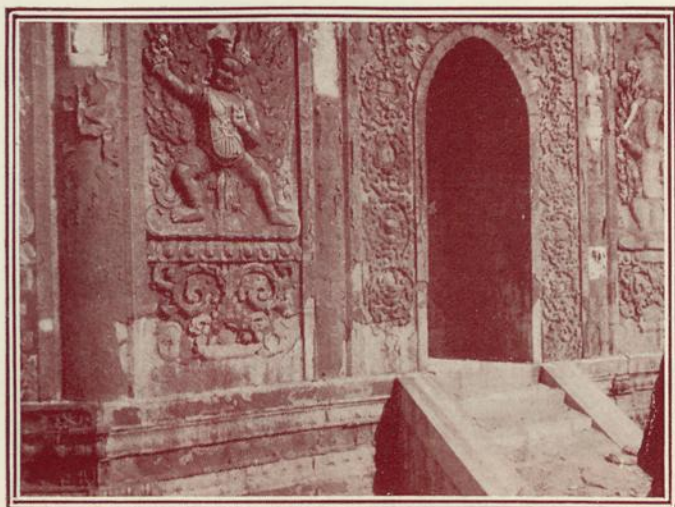




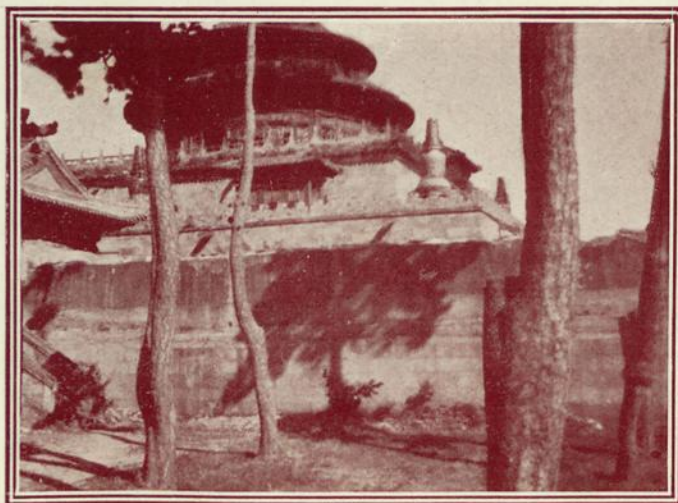
El «expreso» de las eternas paradas.



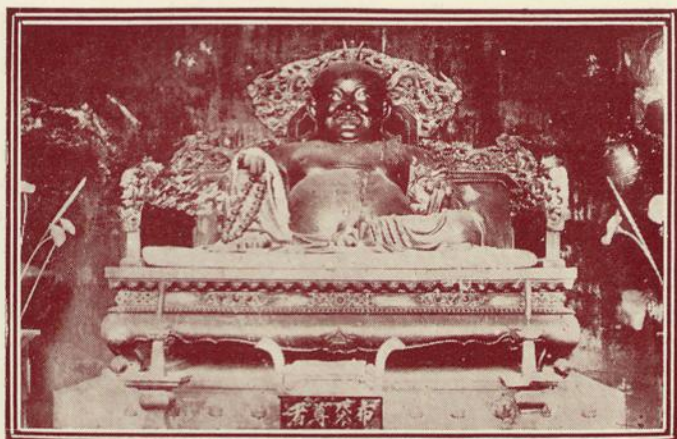
Posada de Miyunshien.



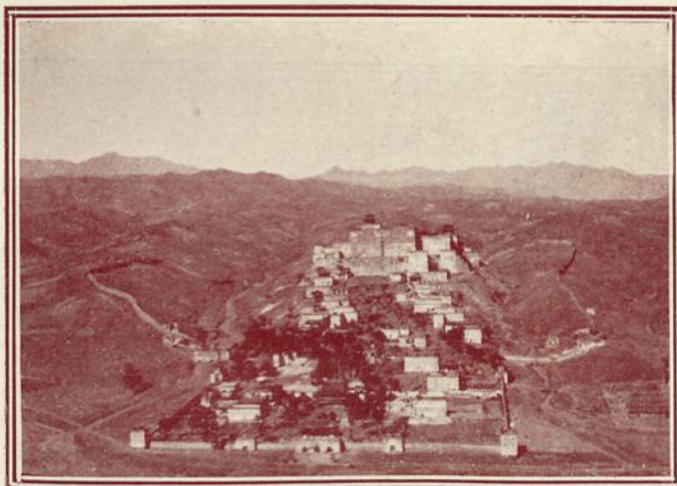
Detalle de la Ta-á del Parque de Caza de Jehol.



I-li-miau. (Templo.)

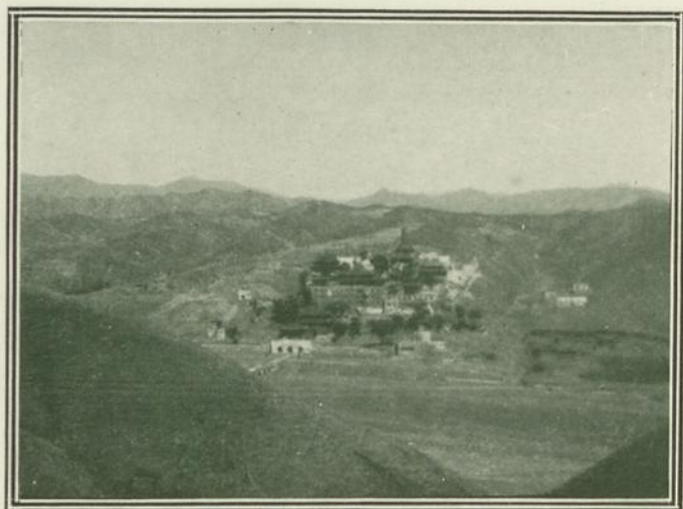


Buda riante en una de las lamaserías de Jehol.

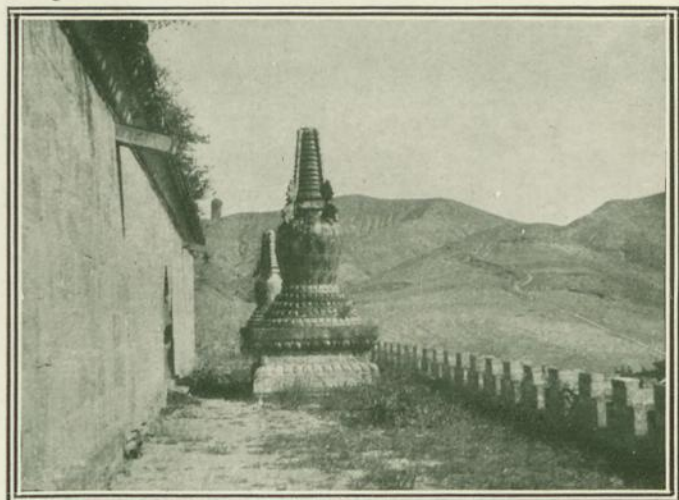


La Gran Lamasería de Potalá.





La gran Lamasería de Sin-gún.



Un «chorten». (Monasterio de Potalá.)